



## **Simple Solutions Distributing LLC.**

Makers Of *Wolverine Brand* Industrial Vapor Phase Adsorbers

Simple Solutions Distributing  
6 Jacobs Rd.  
West Milford, NJ 07480

1-866-No-Stink (1-866-667-8465-Outside NJ)  
1-973-846-7817 (inside NJ and Outside of the US)  
E-Mail SimpleSolution1@optonline.net



### **Wolverine Brand Plastic Manhole Inflow Insert**

**DESCRIPTION:** Wolverine Brand MANHOLE INSERTS are made of high density polyethylene and have been proven effective in reducing or preventing surface water inflow to the collection system, through the manhole lid. Operating and maintenance costs for plant equipment and pumps are minimized, due to reduced flow during heavy rainfall. Also, utility costs are reduced because machinery is not operating for extended periods of time. These inserts are a practical solution to expensive plant expansions, new construction moratoriums or inflationary sewage treatment costs.

**ADVANTAGES:**

- \* NO VALVE method of ventilation available \* Controls sewer odors in residential areas
- \* Single or double valve ventilation system available \* Keeps grit, sand, salt, chemical spills, foreign objects
- \* NO Corrosive parts road oils, etc. from entering collection systems
- \* Easy installation and removal \* Cost-effective alternative to replacing existing manhole
- \* Requires no maintenance covers with "water-tight" covers
- \* Dramatically reduce sewage treatment costs \* Deep and shallow bowl designs available

**PHYSICAL PROPERTIES:**

Wolverine Brand Manhole Inserts are manufactured from High Density Polyethylene, meeting the requirements of ASTM D-1248, Class A, Category 5, with a finish thickness of 1/8". Ventilation is achieved by either the thru-bore, single or double valve methods. A polyethylene strap is factory installed to make removal of the unit a simple, one person operation. A factory installed closed-cell neoprene or cross-linked polyethylene gasket is available upon request.

**INSTALLATION:** No special tools are required to install MANHOLE INSERTS. Just remove the manhole cover and clean the rim of the frame. Place the MANHOLE INSERT on the manhole frame rim and replace the manhole cover.

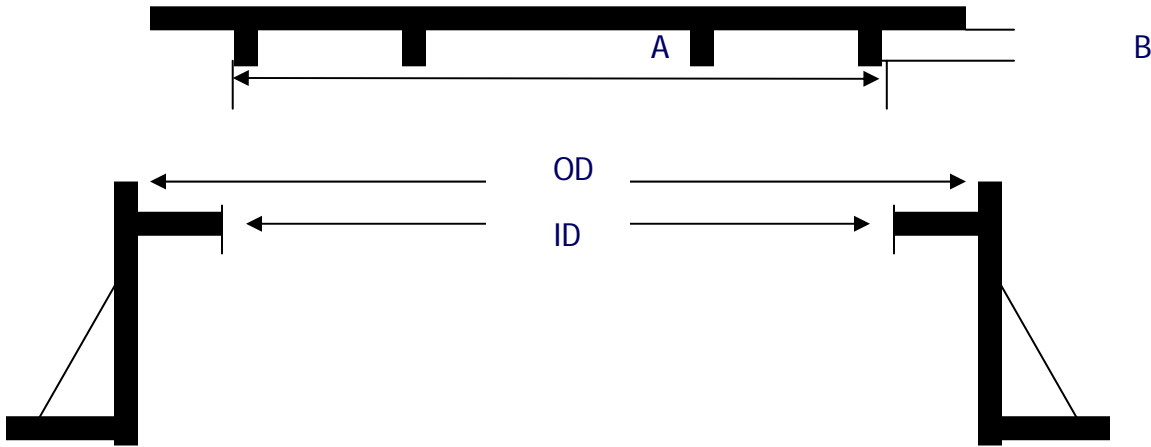
**MEASURING INSTRUCTIONS**

**MEASUREMENTS NEEDED FOR PROPER INSTALLATION OF**

Note: The following measurements are required prior to ordering.

The Casting Number of the Manhole is also acceptable.

Manhole Cover



| Measurement Description:          | Actual Measurement: |
|-----------------------------------|---------------------|
| <b>A= Drop Ring Diameter</b>      | <b>A=</b>           |
| <b>B= Drop Ring Depth</b>         | <b>B=</b>           |
| <b>OD= Manhole Frame Diameter</b> | <b>OD=</b>          |
| <b>ID= Inside Frame Diameter</b>  | <b>ID=</b>          |